

RESOLVE

High-Purity Animal-Free Recombinants

Diagnostic Markers 

Cytokines 

Growth Factors 

Resolve Diagnostics Pvt. Ltd. is a Mumbai-based biotech company that manufactures core raw material, biosimilars, enzymes used in molecular biology and recombinant proteins for the diagnostic kit manufacturing industry.

Our team of 40+ employees span across science and engineering backgrounds in biotechnology, pharma and medical devices. The company has a state-of-the-art, ISO 13485:2016 biotech research & production facility in Ambarnath, Thane and a corporate office in Andheri, Mumbai.



Excellent Quality Management System

Manufactured and QC tested under strict compliance	Full batch production and control records
Manufactured at ISO 13485:2016 facility	Equipment maintenance and calibration
Animal-free materials	Validation of analytical procedures
ISO 7 – Class 10000 clean room and automatic filling equipment	Stability studies conducted



Strict Product Quality Controls and Standards

70+ IN-HOUSE QUALITY TESTS

Every lot of our recombinant proteins undergoes stringent quality checks and control. We test for consistency, high purity, activity and long-term stability.



Assured supply of critical recombinant proteins

- Quick and timely supply
- Local shipping costs
- No duties
- Customization of quantity



Third Party Validations

The company has tie-ups with institutes like Haffkine Institute, Mumbai and testing centers like Metropolis for testing and validation of its assays and proteins

70+ Quality Checks and Control



Recombinant Proteins

We have the expertise to scale up the production of any protein and we offer economical pricing on bulk orders. We cater to both domestic and global clients.

In addition to our diverse catalogue and semi-custom recombinant protein products, we offer custom recombinant protein production services to meet a variety of research needs.

Cytokines

- Interleukin 2 (IL-2)
- Interleukin 6 (IL-6)
- Interleukin 15 (IL-15)
- Interleukin 7 (IL-7)
- Interleukin 21 (IL-21)
- Tumor Necrosis Factor Alpha (TNF α)
- Granulocyte-Colony Stimulating Factor (G-CSF)
- Granulocyte-Macrophage Colony Stimulating Factor (GM-CSF)
- Stromal cell-derived Factor 1 (SDF-1)
- Cyclin T1 (CCNT1)
- Interferon-gamma-induced Protein (IP-10/CXCL10) with C-His



Diagnostic Markers

- Troponin T (TnT)
- Troponin I (TnI)
- Myoglobin (MB)
- Fatty Acid Binding Protein 3 (FABP3)
- N Terminus Pro-Brain Natriuretic Peptide (NT-ProBNP)
- Galectin 3
- Creatine Kinase MB (CKMB)
- Neurofilament Light Polypeptide (Nefl)
- Neutrophil Gelatinase Associated Lipocalin (NGAL)
- Papillomavirus 16 (HPV E7)



Growth Factors

- Fibroblast Growth Factor 1 (FGF-1)
- Fibroblast Growth Factor 2 (FGF-2)
- Platelet-Derived Growth Factor B (PDGF-B)
- Insulin-like Growth Factor 1 (IGF-1)
- Insulin-like Growth Factor 2 (IGF-2)
- Transforming Growth Factor-Beta (TGF- β)



High Purity



High Activity



Excellent Consistency



Flexible Customization

Human Interleukin 6 (IL-6)

SKU: RDRCP03

Interleukin-6 (IL-6) is a member of the pro-inflammatory cytokine family, induces the expression of a variety of proteins responsible for acute inflammation, and plays an important role in the proliferation and differentiation of cells in humans.

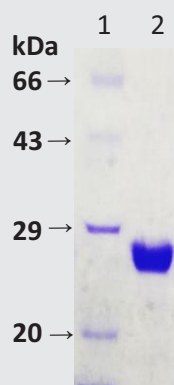
Rapid production of IL-6 contributes to host defence during infection and tissue injury, but excessive IL-6 synthesis is involved in disease pathology. It acts as a biomarker for inflammation. It can stimulate the growth of stem cells and has several noted effects on the maturation and survival of myeloid cells.

IL-6 also has potent effects on thrombopoiesis. It is a stimulator of platelet production.

Sample Datasheet:

Product name:	Recombinant Interleukin 6 (30-212 aa, His-tag) Human Protein
Description:	Recombinant human IL-6 protein fused to His-tag at N-terminus (30-212 aa, His-tag), was expressed in <i>E. coli</i> and purified by using conventional chromatography techniques
Synonyms:	B cell differentiation factor, BCDF, BSF-2, HPGF, HSF, MGI-2, B-cell stimulatory factor 2, Hybridoma growth factor, CTL differentiation factor, CDF, IL-6, HGF
UniProt ID:	P05231.1
Species Expression host Tag:	Human <i>E. coli</i> His-tag
Predicted MW:	~24.3 kDa
Physical appearance:	Sterile filtered colourless solution.
Storage Buffer:	20mM Tris, 150mM NaCl, 25% Glycerol, 1mM PMSF, pH 9.0
Concentration:	Lot specific determined by Bradford assay
Purity:	≥ 95% by SDS-PAGE
Storage temperature:	-70°C
Stability:	Store undiluted at 2-8°C for up to two weeks or in aliquots at -70°C for longer. Avoid multiple freeze-thaw.
Shelf life:	1.5 years from the date of manufacturing
Note:	This product is not for human/animal consumption. For in vitro use only. Not for use in therapeutics.

Product image:



Sample Interleukin 6 (IL-6) Activity Report:

LABORATORY TEST REPORT



Patient Name : RESOLVE DIAGNOSTIC PVT LTD

Age / Gender : 1 years / Other

Mobile No. : -

Patient ID : 135969

Source : Badlapur CC - THCCBUD

Collection Time : Jan 05, 2023, 08:31 p.m.

Receiving Time : Jan 05, 2023, 08:31 p.m.

Reporting Time : Jan 06, 2023, 12:26 p.m.

Sample ID :



Test Description	Value(s)	Unit(s)	Reference Range
INTERLEUKIN-6 **			
IL-6 (Interleukin -6)	6.84	pg/mL	0.00-6.4

Method : CLIA

Interpretation :-

1. Interleukin-6(IL-6) is a pleiotropic cytokine with a wide range of functions.
2. IL-6 production is rapidly induced in the course of acute inflammatory reactions associated with injury trauma ,stress, infection, brain death, neoplasia ,and other situations.
3. IL-6 concentrations in trauma patients may predict later complications from additional surgical stress or indicate missed injuries or complications.
4. Sequential measurements of IL-6 in serum or plasma of patients admitted to the ICU showed to be useful in evaluating the severity of SIRS (Systemic inflammatory response syndrome) ,sepsis and septic shock and to predict the outcome of these patients .
5. IL-6 is also useful as an early alarm marker for the detection of neonatal sepsis.
6. IL-6 also plays a role in chronic inflammation eg. Rheumatoid arthritis(RA)

NOTE:

Sample collected in red top plain tube non-sst can give excessively high result.

(REFERENCE-Pre-analytical effects of blood sampling and handling in quantitative immunoassays for rheumatoid arthritis by Crescendo Bioscience, Inc.,341 Oyster Point Blvd., South San Francisco, CA 94080, United States)

Patients on Biotin supplement may have interference in some immunoassays. With individuals taking high dose Biotin (more than 5 mg per day) supplements, at least 8-hour wait time before blood draw is recommended.

Ref: Arch Pathol Lab Med—Vol 141, November 2017

END OF REPORT

Dr. Prashant Shetty
(M.D. Pathology)

Scan to Validate



Human Troponin T (TnT)

SKU: RDRCP02

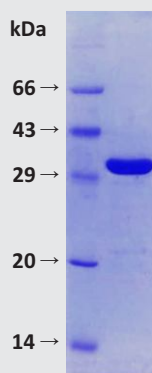
Troponin T (TnT) is the tropomyosin-binding subunit of the Troponin complex, the regulatory complex which confers calcium-sensitivity to striated muscle actomyosin ATPase activity. The cardiac isoform Troponin T-TNNT2 is useful in detection of myocardial infarction. The detection of a rise and/or fall of cardiac troponin plays a key role in the earlier diagnosis of myocardial infarction (MI).

Cardiac troponins are markers of myocardial necrosis, and, because of their high cardiac-specificity, are the preferred biomarker for the diagnosis of cardiac injuries.

Sample Datasheet:

Product name:	Recombinant Troponin T Cardiac Troponin T (1-285 aa, His-tag) Human Protein
Description:	Recombinant human TNNT2 protein fused to His-tag at N-terminus (1-285 aa, His- tag), was expressed in <i>E. coli</i> and purified by using conventional chromatography techniques
Synonyms:	CMH2, RCM3, TnTC, cTnT, CMPD2, MGC3889, TNNT2, TroponinT-cardiac muscle, Cardiac muscle troponin T, troponin T type 2 (cardiac)
UniProt ID:	P45379
Species Expression host Tag:	Human <i>E. coli</i> His-tag
Predicted MW:	37.7 kDa
Physical appearance:	Sterile filtered colourless solution
Storage Buffer:	50mM Tris, 250mM NaCl, 6M Urea, 15mM BME, 1 mM EDTA, 1mM PMSF, pH 7.2
Concentration:	Lot specific determined by Bradford assay
Purity:	≥ 90% by SDS-PAGE
Storage temperature:	-20°C
Stability:	Store undiluted at 2-8°C for up to two weeks or in aliquots at -20°C for longer. Avoid multiple freeze-thaw.
Shelf life:	1 year from the date of manufacturing.
Note:	This product is not for human/animal consumption. For in vitro use only. Not for use in therapeutics.

Product image:



Sample Troponin T (TnT) Activity Report:

LABORATORY TEST REPORT



Patient Name : RESOLVE DIAGNOSTIC PVT LTD

Age / Gender : 1 years / Other

Mobile No. : -

Patient ID : 135969

Source : Badlapur CC - THCCBUD

Collection Time : Jan 05, 2023, 08:31 p.m.

Receiving Time : Jan 05, 2023, 08:31 p.m.

Reporting Time : Jan 09, 2023, 12:19 p.m.

Sample ID :



Test Description	Value(s)	Unit(s)	Reference Range
------------------	----------	---------	-----------------

Troponin- T High Sensitive *

High Sensitive Troponin-T Method : Chemiluminescence n	83.69	pg/mL	< 30 Please note changes in Reference range , Unit and Method
---	-------	-------	--

Interpretation

Interpretation :

The current high-sensitivity troponin (hsTn) assay can detect low levels (3 pg/mL). (Following are the conversion factors Concentration in pg/ml x 0.001= µg/L, Concentration in pg/ml x1.0 =ng/L)

Reporting in many decimal point placements causes confusion and potentially can lead to misinterpretations, hence it has been recommended (IFCC2014) that the results are expressed in whole numbers by using ng/L as the unit of measurement.

ELecsys Troponin T assay can be used as an aid in differential diagnosis of acute coronary syndrome (ACS) to identify necrosis (e.g -acute myocardial infarction (AMI))

Test is indicated for risk stratification of patients presenting with ACS and for cardiac risk in patients with chronic renal failure.

cTnT is cardiospecific, highly sensitive marker for myocardial damage. In cases of AMI, Troponin T levels in serum rise about 3 to 4 hrs after the occurrence of cardiac symptoms and can remain elevated for up to 14 days

cTnT is an independent prognostic marker for predicting near, mid and even long term outcome of patients with ACS

Myocardial cell injury leading to elevated cTnT can also occur in congestive cardiac failure, cardiomyopathy, myocarditis, heart contusion, renal failure, lung embolism, stroke, left ventricular dysfunction in septic shock, and interventional therapy like cardiac surgery, non cardiac surgery, PTCA and drug induced cardiotoxicity.

Elevated troponin levels may be indicative of myocardial injury associated with heart failure, myocarditis, arrhythmias & other causes like chronic renal disease, pulmonary embolism. **Reference:** hs Troponin T IFCC November 2014.

NOTE:

Patients on Biotin supplement may have interference in some immunoassays. With individuals taking high dose Biotin (more than 5 mg per day) supplements, at least 8-hour wait time before blood draw is recommended.

Ref: Arch Pathol Lab Med—Vol 141, November 2017

Dr. Prashant Shetty
(M.D. Pathology)

Scan to Validate



Human Troponin I (Tnl)

SKU: RDRCP01

Description

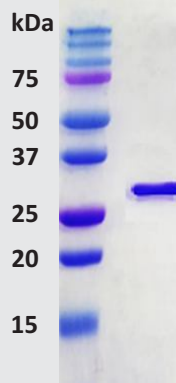
Troponin I (Tnl) is the inhibitory subunit of the Troponin complex, the regulatory complex which confers calcium-sensitivity to striated muscle actomyosin ATPase activity. The cardiac isoform Troponin I-TNNI3 is useful in detection of myocardial infarction.

The detection of a rise and/or fall of cardiac troponin plays a key role in the earlier diagnosis of myocardial infarction. Cardiac troponins are markers of myocardial necrosis, and, because of their high cardiac-specificity, are the preferred biomarker for the diagnosis of cardiac injuries.

Sample Datasheet:

Product name:	Recombinant Troponin I Cardiac Troponin I (2-210 aa, His-tag) Human Protein
Description:	Recombinant human TNNI3 protein fused to His-tag at N-terminus (2-210 aa, His-tag), was expressed in <i>E. coli</i> and purified by using conventional chromatography techniques
Synonyms:	Cardiac troponin I, TNNI3, TNNC1, CMH7, RCM1, cTnl, CMD2A, MGC116817
UniProt ID:	P19429
Species Expression host Tag:	Human <i>E. coli</i> His-tag
Predicted MW:	27.4 kDa
Physical appearance:	Sterile filtered colourless solution
Storage Buffer:	50mM Tris, 250mM NaCl, 6M Urea, 15mM BME, 1 mM EDTA, 1mM PMSF, pH 7.2
Concentration:	Lot specific determined by Bradford assay
Purity:	≥ 95% by SDS-PAGE
Storage temperature:	-20°C
Stability:	Store undiluted at 2-8°C for up to two weeks or in aliquots at -20°C for longer. Avoid multiple freeze-thaw.
Shelf life:	1 years from the date of manufacturing.
Note:	This product is not for human/animal consumption. For in vitro use only. Not for use in therapeutics.

Product image:



Sample Troponin I (TnI) Activity Report:

LABORATORY TEST REPORT



Patient Name : RESOLVE DIAGNOSTIC PVT LTD

Age / Gender : 1 years / Other

Mobile No. : -

Patient ID : 135969

Source : Badlapur CC - THCCBUD

Collection Time : Jan 05, 2023, 08:31 p.m.

Receiving Time : Jan 05, 2023, 08:31 p.m.

Reporting Time : Jan 06, 2023, 12:26 p.m.

Sample ID :



222301045016

Test Description	Value(s)	Unit(s)	Reference Range
Troponin - I Quantitative **			
High Sensitive Troponin-I Method : (Serum,ELFA)	330.5	ng/L	8 - 29

Interpretations

Diagnosis

The high tissue specificity of cardiac Troponin I measurements is beneficial for identifying cardiac injury in clinical conditions involving skeletal muscle injury resulting from surgery, trauma, extensive exercise, or muscular disease.

Highly sensitive troponin (cTn) assay allows earlier detection of acute Myocardial Infarction (MI), with shortening of time window for serial measurement to 3 hours. Serial sampling to detect the temporal rise and fall of cTnI levels is recommended for the differentiation of acute cardiac events from chronic cardiac disease. The use of delta values (difference of cTnI levels between two test points) may have the potential to improve the clinical specificity for acute coronary syndrome (ACS).

STAT High Sensitive Troponin-I results should be used in conjunction with other information such as ECG, clinical observations, and symptoms, etc

Elevated troponin levels may be indicative of myocardial injury associated with heart failure, myocarditis, arrhythmias & other causes like chronic renal disease, pulmonary embolism.

END OF REPORT

Dr. Prashant Shetty
(M.D. Pathology)

Scan to Validate



Shop No. 01, Siddhachal Phase 6, Siddhachal Elite, Vasant Vihar, Pokharan Road 2, Thane West, Mumbai, Maharashtra - 400610

Tel No. +91 73045 42263

thane.lab@igenetic.com

Toll Free : 1800 210 1616

www.manipaltrutest.com

Human Myoglobin (MB)

SKU: RDRCP04

Description

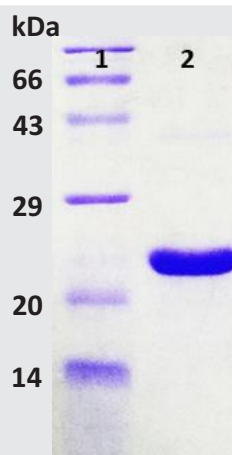
Recombinant human myoglobin (MB) is 20.6 kDa protein that is expressed in *E. coli*. It is a cytoplasmic oxygen-binding protein which is encoded by the MB gene and expressed in myocytes of the heart and skeletal muscle.

The measurement of myoglobin levels is useful in the diagnosis of skeletal and cardiac muscle damage. Myoglobin is known as a marker of myocardial damage and is commonly as an early marker of acute myocardial infarction (AMI). It appears in patient's blood 1 to 3 hours after onset of the symptoms, reaching peak level within 8 to 12 hours. Because of high myoglobin concentration in skeletal muscle tissue, even minor skeletal muscle injury results in the significant increase of myoglobin concentration in blood. Myoglobin also serves as a sensitive marker for muscle injury resulting from cardiac infarction.

Sample Datasheet:

Product name:	Recombinant Myoglobin (1-153 aa, His-tag) Human Protein
Description:	Recombinant human Myoglobin protein fused to His-tag at N-terminus (153 aa, His-tag), was expressed in <i>E. coli</i> and purified by using conventional chromatography techniques
Synonyms:	MB, PVALB, MGC13548, Myoglobin
UniProt ID:	P02144
Species Expression host Tag:	Human <i>E. coli</i> His-tag
Predicted MW:	~20.6 kDa
Physical appearance:	Sterile filtered colourless solution
Storage Buffer:	20mM Tris, 250mM NaCl, 50% Glycerol, 5mM BME, 1mM PMSF, pH 8.0
Concentration:	Lot specific determined by Bradford assay
Purity:	≥ 95% by SDS-PAGE
Storage temperature:	-20°C
Stability:	Store undiluted at 2-8°C for up to two weeks or in aliquots at -20°C for longer. Avoid multiple freeze-thaw.
Shelf life:	6 months from the date of manufacturing.
Note:	This product is not for human/animal consumption. For in vitro use only. Not for use in therapeutics.

Product image:



Sample Myoglobin (MB) Activity Report:

LABORATORY TEST REPORT



ID : 148862 Collection : 08/06/2023, 06:04 PM Client Name : Badlapur CC -
Name : RESOLVE DIAGNOSTIC C Received : 08/06/2023, 06:04 PM THCCBUD
DOB/Age : 0 days Reported : 10/06/2023, 11:08 PM Client Address : THANE
Gender : Other Ref. Doctor : -



Test Description	Value(s)	Unit(s)	Reference Range
------------------	----------	---------	-----------------

Myoglobin, Serum **

Myoglobin, Serum (CLIA)	678	ng/mL	Up to 48.8
----------------------------	-----	-------	------------

1. High levels are used to diagnose and monitor suspected cases of myocardial infarction in conjunction with other markers like troponin. Significant increases within an hour are highly suggestive of recent infarct.
2. High levels can occur in accidents, seizures, surgery, or any muscle disease, such as injury, muscular dystrophy or polymyositis.
3. Increased myoglobin levels can occur after muscle injections or strenuous exercise.
4. Myoglobin levels may be high in renal failure.
5. Myoglobin is released in bursts and one level may be misleading

Note : Kindly note change in reference range

Patients on Biotin supplement may have interference in some immunoassays. With individuals taking high dose Biotin (more than 5 mg per day) supplements, at least 8-hour wait time before blood draw is recommended.

Ref: Arch Pathol Lab Med—Vol 141, November 2017

****END OF REPORT****



Dr. Nilesh Bhamare
(MBBS, MD PATHOLOGY)



RESOLVE DIAGNOSTICS PRIVATE LIMITED

📍 4th Floor, Jet Prime, 39-B, Suren Road, Andheri (East), Mumbai - 400 093

☎ +91.22.6689.2400 | 📄 +91.22.6689.2401 | ✉ info@resolvediagnostics.in | 🌐 www.resolvediagnostics.in